



San Francisco Public Utilities Commission
1155 Market Street, 11th Floor
San Francisco, CA 94103



Construction will begin in early October 2010. See inside for more information.
Updates online at: www.sfwater.org/SCT or Twitter: @sawycamptrail

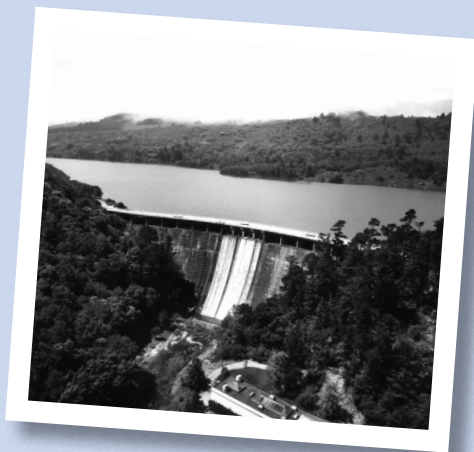
The Water System Improvement Program

The San Francisco Public Utilities Commission's (SFPUC) Water System Improvement Program (WSIP) is a \$4.6 billion bond-funded program to seismically upgrade and repair the regional water system's aging pipelines, tunnels and dams.

The Peninsula Watershed – encompassing the Crystal Springs Reservoirs and San Andreas Lake – is the emergency back-up and supplementary water supply for northern San Mateo County and the City and County of San Francisco.

The Crystal Springs Reservoir projects include the Crystal Springs / San Andreas Transmission System Upgrade, the Lower Crystal Springs Dam Improvements, and the Crystal Springs Pipeline No. 2 Replacement projects. Each of these projects will upgrade pipelines, pumping facilities, and other infrastructure that support the water system and ensure water delivery.

The Crystal Springs Reservoir System projects are essential components in maintaining the SFPUC's Hetch Hetchy Regional Water System, which supplies nearly 100 percent of your community's drinking water. The system provides drinking water to over 2.5 million residents in the counties of Alameda, Santa Clara, San Mateo and San Francisco.



Need More Information?

Contact our Peninsula Region project team at:
(866) 973-1476 or
peninsula@sfwater.org

Visit our blog:
www.sfwater.org/SCT

San Francisco Public Utilities Commission



HETCH HETCHY
WATER SYSTEM
IMPROVEMENT
PROGRAM



Crystal Springs Reservoir System Projects

Fact Sheet



www.sfwater.org/SCT

Fall 2010

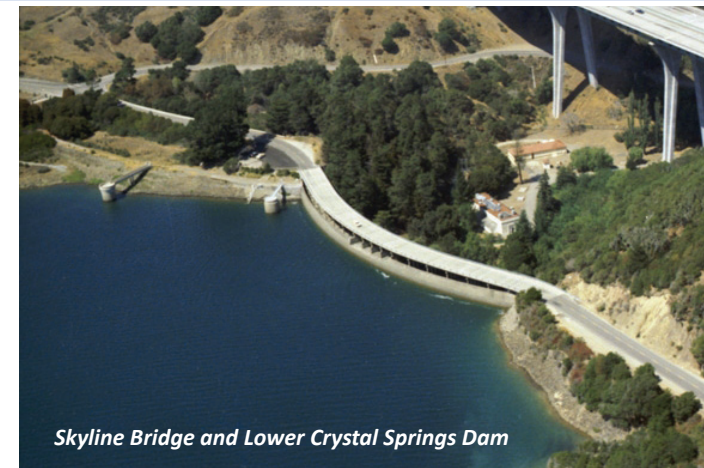
Water System Construction Projects Coming This Fall

The San Francisco Public Utilities Commission (SFPUC) manages the 23,000-acre Peninsula Watershed encompassing the Crystal Springs Reservoirs and San Andreas Lake. As part of the Hetch Hetchy Regional Water System, this watershed provides emergency and supplementary drinking water supply to all of San Mateo County, as well as the City and County of San Francisco.

This fall a series of projects will be undertaken near Skyline Bridge and Lower Crystal Springs Dam on Skyline Blvd.

Skyline Bridge

Skyline Bridge, also known as the Crystal Springs Dam Bridge, was constructed in the 1920's as part of State Route 35 and is situated on top of the Lower Crystal Springs Dam. In 1986, the bridge was analyzed and found to be seismically unsafe. Caltrans bridge inspections have indicated this bridge should be replaced.



Skyline Bridge and Lower Crystal Springs Dam

To facilitate this required seismic upgrade and prepare for several water system improvement projects, San Mateo County will begin demolition of Skyline Bridge in early October 2010.

As work begins on Skyline Bridge, the SFPUC will begin upgrades to a variety of systems around the reservoirs.

Crystal Springs / San Andreas Transmission System Upgrade – Fall 2010

The Crystal Springs / San Andreas Transmission System (CSSATS) is a series of inlet and outlet structures, pipelines and pumping facilities that move water from the Crystal Springs Reservoirs north to San Andreas Lake and the Harry Tracy Water Treatment Plant, and then into the water distribution pipelines. This system ensures that the Peninsula's emergency and supplemental water supply can be quickly moved into the water pipes leading to our taps.

The CSSATS project will begin construction in late October 2010, and work will continue at various locations near the reservoirs through 2013.

Lower Crystal Springs Dam – 2011 (proposed)

Following demolition of Skyline Bridge, the SFPUC plans to begin work on upgrading the hydraulic features of the Lower Crystal Springs Dam spillway.

Our contractor will raise the existing parapet wall 9 feet at the top of the dam. In addition to this higher waterside wall, the dam's spillway will be widened and the stilling basin

will be enlarged. The stilling basin is located at the base of the dam and 'stills' water from the spillway. This larger stilling basin will slow released water before it enters San Mateo Creek.

These improvements will ensure that during an extremely large flood event, the reservoir's water is correctly directed through the dam's spillway and into San Mateo Creek.

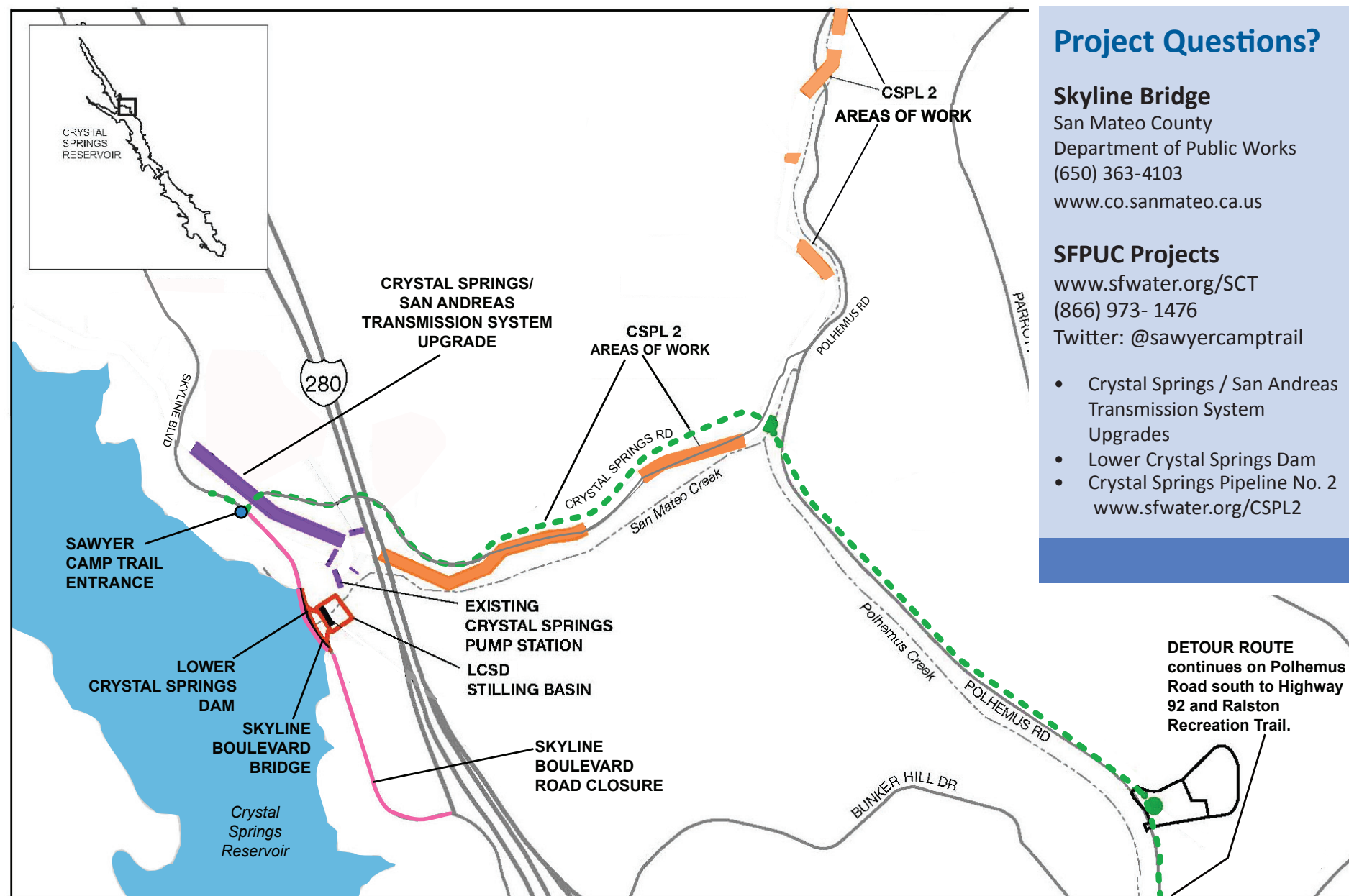
The modifications to the Lower Crystal Springs Dam are required by the California Division of Safety of Dams.

Crystal Springs Pipeline No. 2 (CSPL2) Replacement Project – 2012 (proposed)

Crystal Springs Pipeline No. 2 is a 19-mile pipeline that delivers water from the Crystal Springs Pump Station at the foot of the dam along Crystal Springs Road into Hillsborough and then northern San Mateo County. Installed between 1900 and 1930, CSPL2 is one of the oldest water mains that feed the regional water system.

In 2012, construction work will occur on Crystal Springs Road and adjacent to El Cerrito Avenue in Hillsborough as we upgrade and replace sections of this pipeline. Additional work on this project will occur along El Camino Real in Burlingame and Millbrae in 2011.

Crystal Springs Reservoir System Projects Locations



- CSPL2, Crystal Springs Pipeline No. 2 Replacement Project
- LCSD Lower Crystal Springs Dam Improvements Project
- Detour Route during Skyline Bridge Closure
- CSSATS Crystal Springs/San Andreas Transmission System Upgrade Project
- Skyline Boulevard Road Closure

Project Questions?

Skyline Bridge

San Mateo County
Department of Public Works
(650) 363-4103
www.co.sanmateo.ca.us

SFPUC Projects

www.sfwater.org/SCT
(866) 973- 1476
Twitter: @sawycamptrail

- Crystal Springs / San Andreas Transmission System Upgrades
- Lower Crystal Springs Dam
- Crystal Springs Pipeline No. 2
www.sfwater.org/CSPL2

Sawyer Camp and San Andreas Trails

Trail Access

Visited by approximately 300,000 people a year, the 6-mile Sawyer Camp Trail is one of the most popular trails in San Mateo County. Sawyer Camp Trail, previously called San Andreas Valley Road or just Valley Road, was once the main highway between San Francisco and Half Moon Bay. The trail is a popular recreation area for bicyclists, joggers and hikers.

During construction, sections of the Sawyer Camp Trail will be closed only for short periods, similar to general trail maintenance.

The San Andreas Trail extends from San Bruno Avenue on the north to Hillcrest Boulevard on the south, where it connects to the Sawyer Camp Trail. The trail passes close to San Andreas reservoir in its northerly section, and provides beautiful views of the watershed.

San Andreas Trail (2.6 miles) and the Crystal Springs segment from Highway 92 southward (6.7 miles) will remain open.

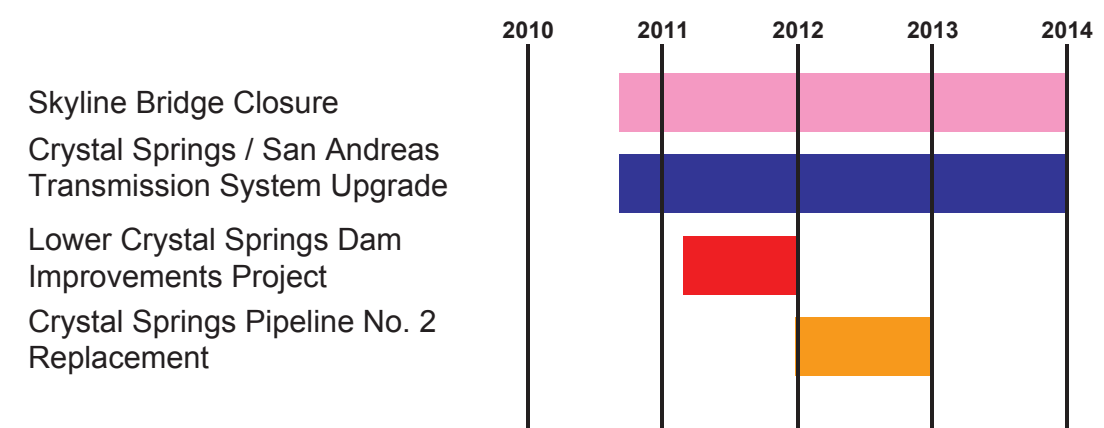


Bicycle Access

Once Skyline Bridge is closed, cyclists will be detoured along Crystal Springs Road to Polhemus Road and then to the Ralston Recreation Trail to connect back to Cañada Road.

The new Skyline Bridge, slated to open in summer 2013, will have a 15-foot-wide multipurpose recreational trail separated from the vehicle roadway.

Construction Timeline



Sawyer Camp Trail will remain open.

Be aware parking may be more limited. Vista Parking Lot will close in October 2010.